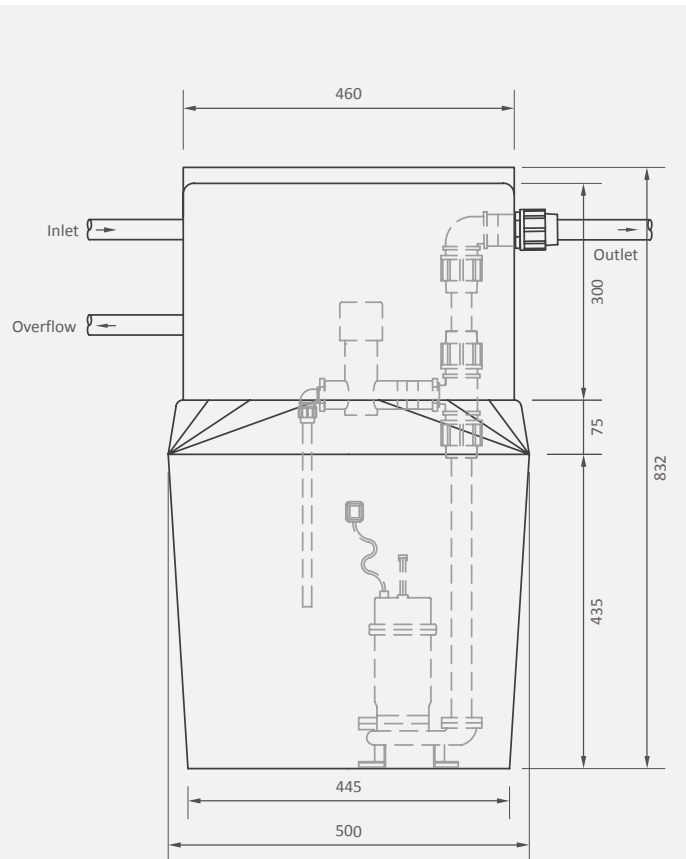


Greywater Mini

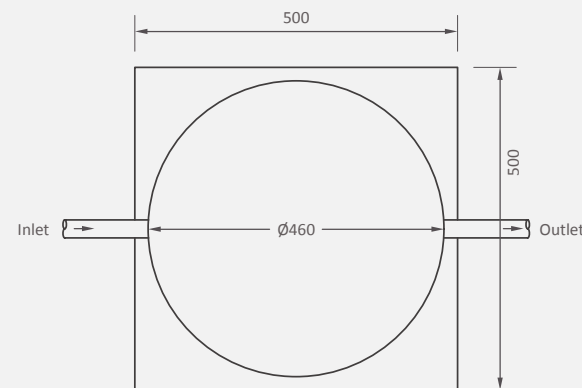
125L

Supplied pre-assembled and ready-for-installation, our domestic greywater systems have been designed with ease of operation and maintenance in mind.

Side view



Front view



Product specifications:

Capacity:

- Up to 6 people

Application:

- Below ground greywater system
- Allows you to manage and safely reuse domestic greywater for irrigation purposes

Supplied with:

- 1) 460mm lid
- 2) 300mm (h) lid extension
- 3) Inlet fitted with:
 - 50mm PVC socket
- 4) Overflow fitted with:
 - 50mm PVC socket
- 5) Outlet fitted with:
 - 32/25mm socket
- 6) Submersible pump (DAB Feka BVP750 with float switch)
- 7) Calcium hypochlorite dispenser complete with:
 - 1 x Cartridge

Availability:

Standard colour ●

10-year Warranty*

*We offer a 10-year warranty on our roto-moulded products and components. All mechanical and electrical components included in our solutions are covered by applicable manufacturers' warranties.

Note: All dimensions are in millimetres and the drawings are not to scale. The design is the property of Calcamite.