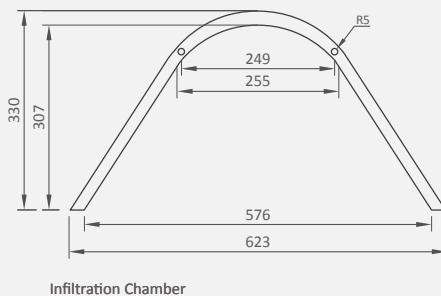
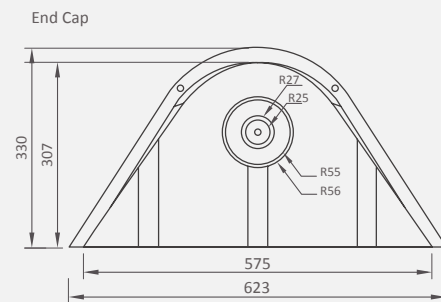


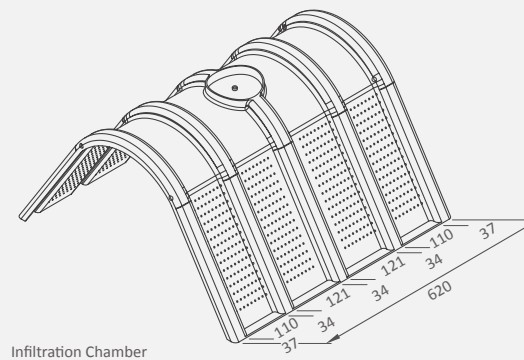
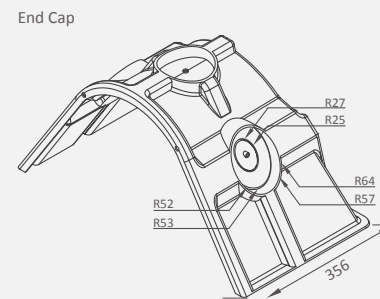
Infiltration Chambers

Cost-effective, less-invasive alternatives to standard soak-aways/French drains that promote the growth of bacteria and form an eco-friendly biological mat to ensure minimal pollution when disposing of treated sewage.

Side view



Isometric view



Product specifications:

Capacity:

- The general guideline is 1 infiltration chamber for every person utilizing a septic tank (if the soil has a good percolation rate). This will however vary based on the exact soil percolation rate. A soil percolation test is required for accurate specifications as per your setup and application
- Contact us for assistance in this regard.**

Application:

- Below ground
- Promotes efficient effluent infiltration into the soil post septic tank treatment
- Soils with good percolation rate such as sandy soil
- Areas with a low water table in order to prevent contamination of groundwater sources

Supplied with:

- Infiltration chambers are supplied with infiltration end caps to make up a complete unit, this consists of:
 - Infiltration chambers (quantity as per requirements)
 - 2x infiltration chamber end caps (to close off the chambers at both ends)

Availability:

Standard colour ●

10-year Warranty

Note: All dimensions are in millimetres and the drawings are not to scale. The design is the property of Calcamite.