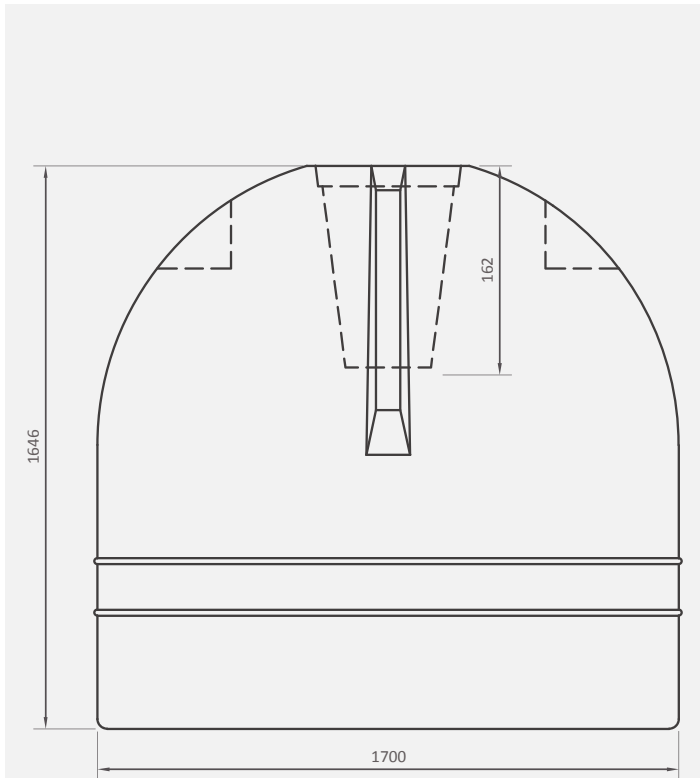


## Septic Tank - Standard

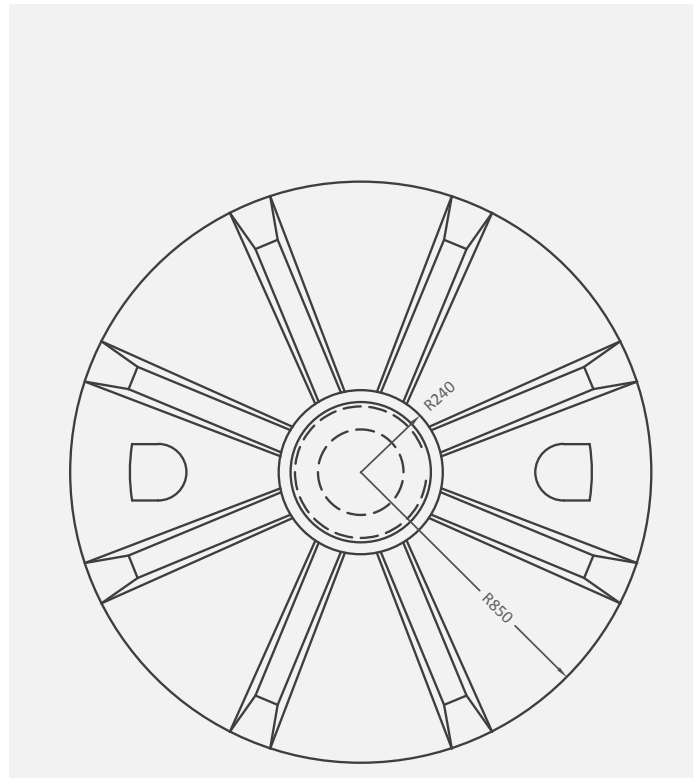
3000L

Our distinctive septic tanks incorporate the use of an inner chamber to ensure better hydraulic efficiency, cleaner effluent discharge, and an improved soak-away performance.

Side view



Front view



### Product specifications:

#### Capacity:

- Maximum of 12 people assuming 200L per person per day

#### Application:

- Below ground
- Where connection to the sewer line is not feasible/possible
- Soils with a good percolation rate such as sandy soil
- Areas with a low water table in order to prevent contamination of groundwater sources

#### Supplied with:

- 1) 460mm lid
- 2) 50mm socket (for outlet)
- 3) 50mm rubber gasket (for outlet)
- 4) 110mm rubber gasket (for inlet)

#### Recommended additions

##### for installation:

110mm inlet junction, 110mm rodding eye and 460mm (d) x 300mm (h) lid extension. **Note:** these are not included as part of the product offering, but are available at an additional cost.

### Availability:

Standard colour ●

10-year Warranty

**Note:** All dimensions are in millimetres and the drawings are not to scale. The design is the property of Calcamite.